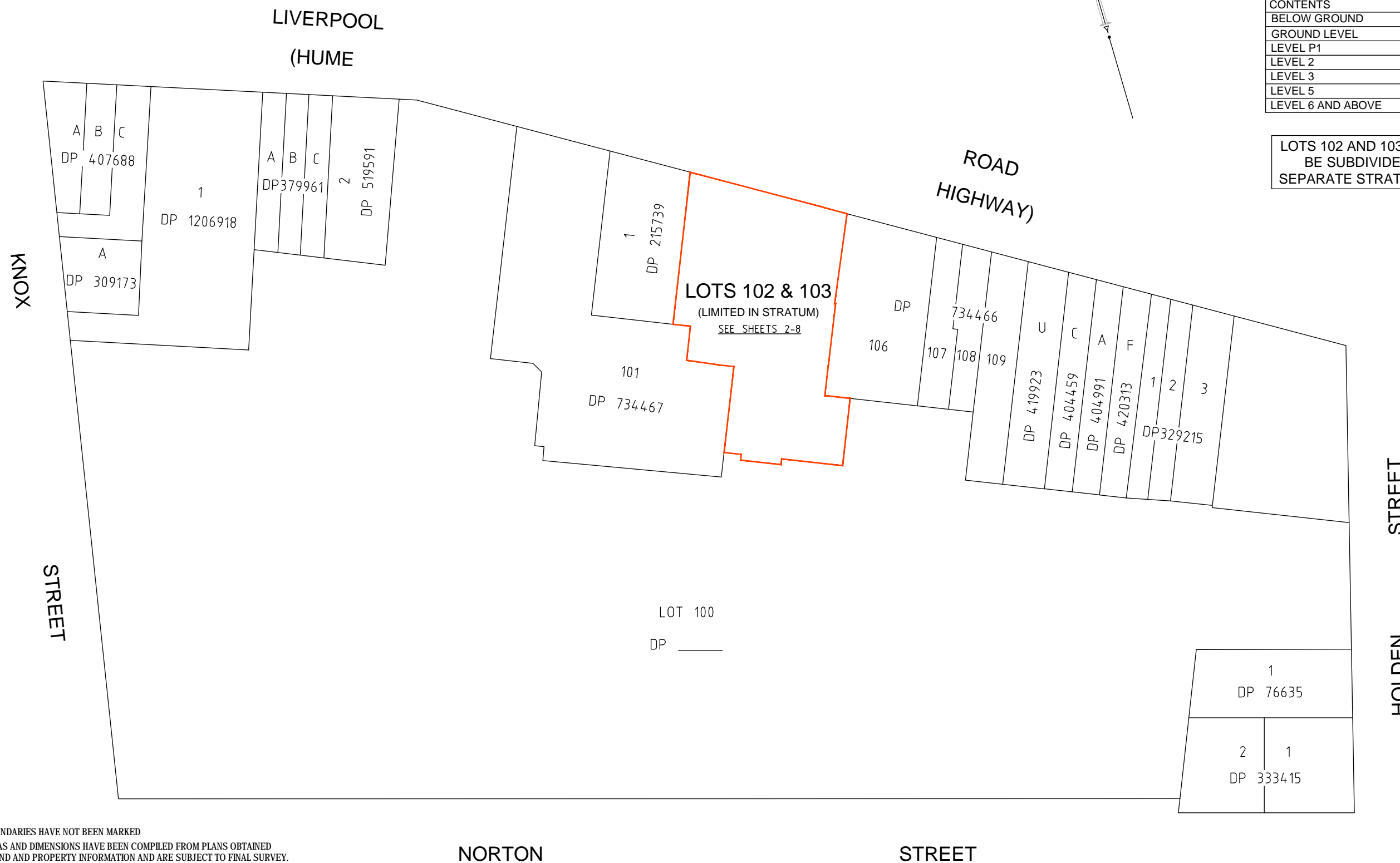


 LOT 102 - RESIDENTIAL  
 LOT 103 - RETAIL

## INDEX

CONTENTS	SHEET
BELOW GROUND	2
GROUND LEVEL	3
LEVEL P1	4
LEVEL 2	5
LEVEL 3	6
LEVEL 5	7
LEVEL 6 AND ABOVE	8

LOTS 102 AND 103 ARE TO  
BE SUBDIVIDED BY  
SEPARATE STRATA PLANS



## NOTES

1. THE BOUNDARIES HAVE NOT BEEN MARKED
2. ALL AREAS AND DIMENSIONS HAVE BEEN COMPILED FROM PLANS OBTAINED FROM LAND AND PROPERTY INFORMATION AND ARE SUBJECT TO FINAL SURVEY.
3. THE PROPOSED BOUNDARIES AND PROPOSED EASEMENTS SHOWN HERON ARE SUBJECT TO APPROVAL OF FINAL DESIGN PLANS AND MAY CHANGE IN ACCORDANCE WITH THOSE PLANS.

Surveyor: JACEK IDZIKOWSKI  
Date of Survey:  
Surveyor's Reference: 22632-42405PS1



# PLAN OF PROPOSED SUBDIVISION OF LOT 101 IN DP

LGA: INNER WEST  
Locality : ASHFIELD  
Subdivision No:  
Lengths are in metres. Reduction Ratio 1:

Registered

DP STAGE 2

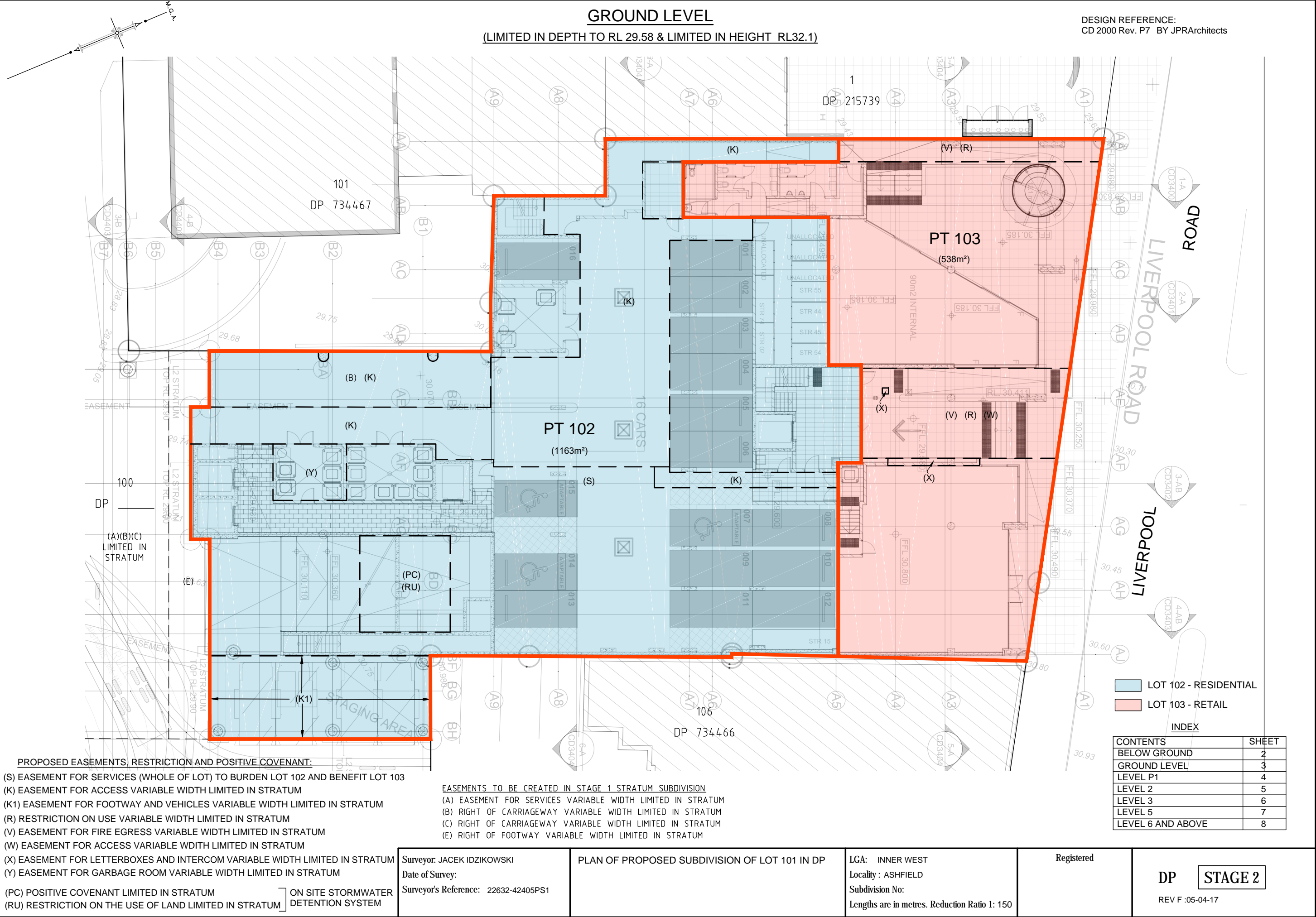
(UNLIMITED IN DEPTH & LIMITED IN HEIGHT TO RL29.58)

 LOT 102 - RESIDENTIAL  
 LOT 103 - RETAIL

CONTENTS	SHEET
BELOW GROUND	2
GROUND LEVEL	3
LEVEL P1	4
LEVEL 2	5
LEVEL 3	6
LEVEL 5	7
LEVEL 6 AND ABOVE	8

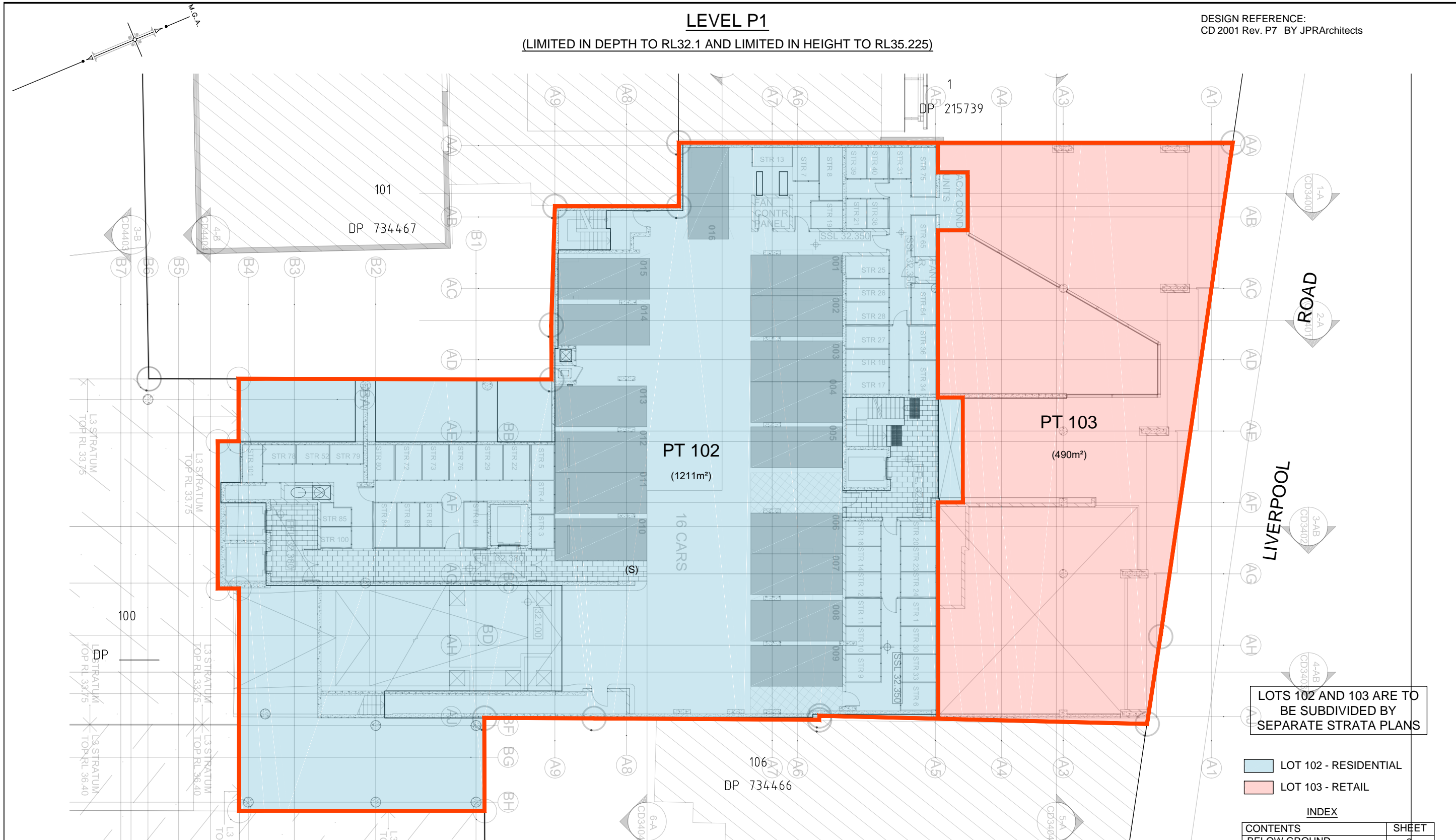
REV F :05-04-17

10	20	30	40	50	60	Table of mm	90	100	110	120	130	140	S:\CURRENT PROJECTS\ASHFIELD Liverpool Road 'Ashfield Mall' - 22632\CAD Drawings\42405PS Stage2\42405PS1.dwg
----	----	----	----	----	----	-------------	----	-----	-----	-----	-----	-----	--



(LIMITED IN DEPTH TO RL32.1 AND LIMITED IN HEIGHT TO RL35.225)

DESIGN REFERENCE:  
CD 2001 Rev. P7 BY JPRArchitects



REV F :05-04-17

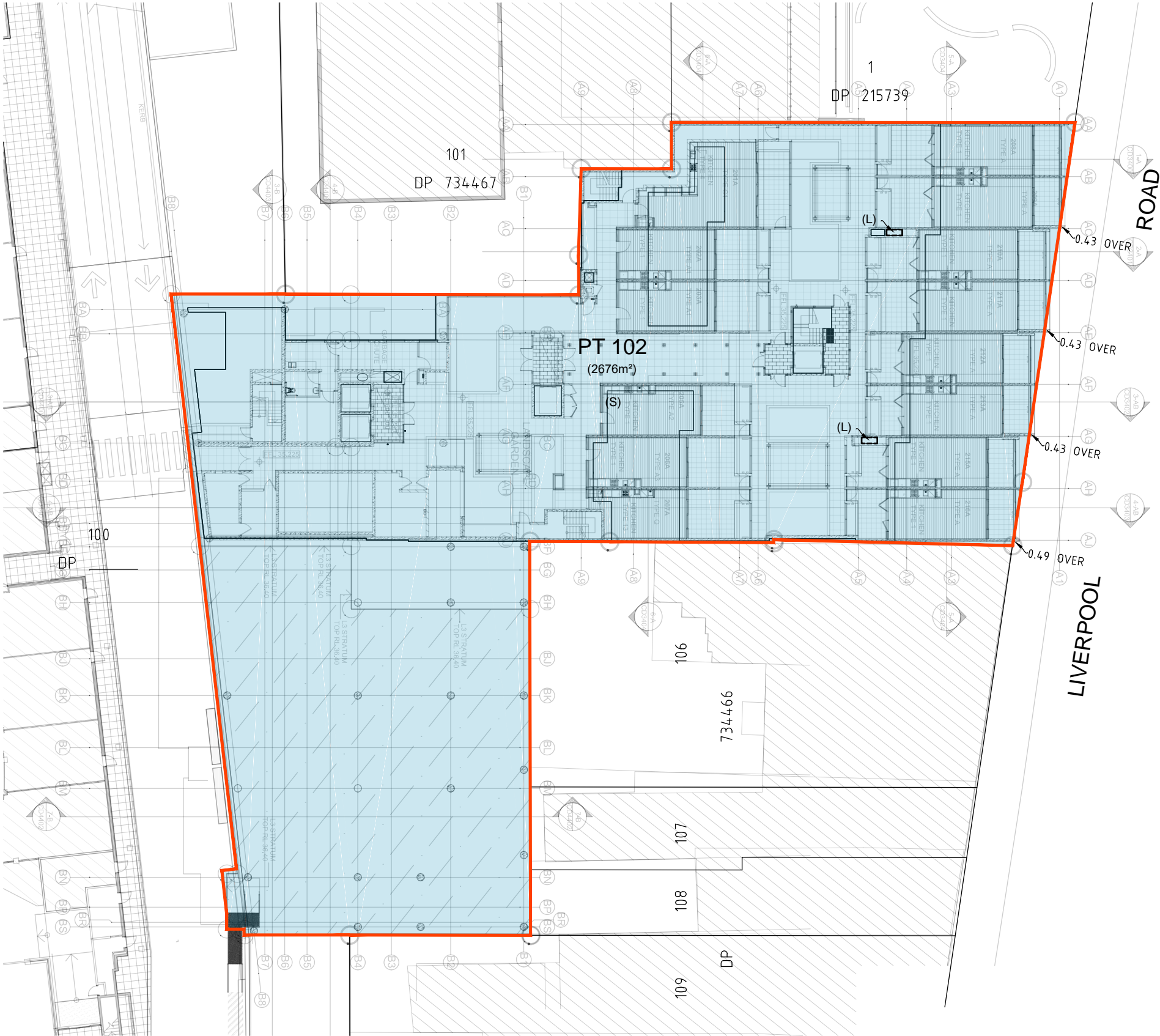
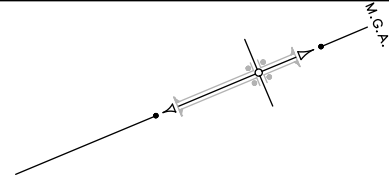
INDEX	
CONTENTS	SHEET
BELOW GROUND	2
GROUND LEVEL	3
LEVEL P1	4
LEVEL 2	5
LEVEL 3	6
LEVEL 5	7
LEVEL 6 AND ABOVE	8



LEVEL 2

(LIMITED IN DEPTH TO RL35.225 AND LIMITED IN HEIGHT TO RL38.0)

DESIGN REFERENCE:  
CD 2002 Rev. P7 BY JPRArchitects



- LOT 102 - RESIDENTIAL
- LOT 103 - RETAIL

INDEX

CONTENTS	SHEET
BELOW GROUND	2
GROUND LEVEL	3
LEVEL P1	4
LEVEL 2	5
LEVEL 3	6
LEVEL 5	7
LEVEL 6 AND ABOVE	8

PROPOSED EASEMENTS:

- (S) EASEMENT FOR SERVICES (WHOLE OF LOT) TO BURDEN LOT 102 AND BENEFIT LOT 103
- (L) EASEMENT FOR TRADE EXHAUST VARIABLE WIDTH LIMITED IN TO BURDEN LOT 102 AND BENEFIT LOT 103

Surveyor: JACEK IDZIKOWSKI  
Date of Survey:  
Surveyor's Reference: 22632-42405PS1

PLAN OF PROPOSED SUBDIVISION OF LOT 101 IN DP

LGA: INNER WEST  
Locality : ASHFIELD  
Subdivision No:  
Lengths are in metres. Reduction Ratio 1: 250

Registered

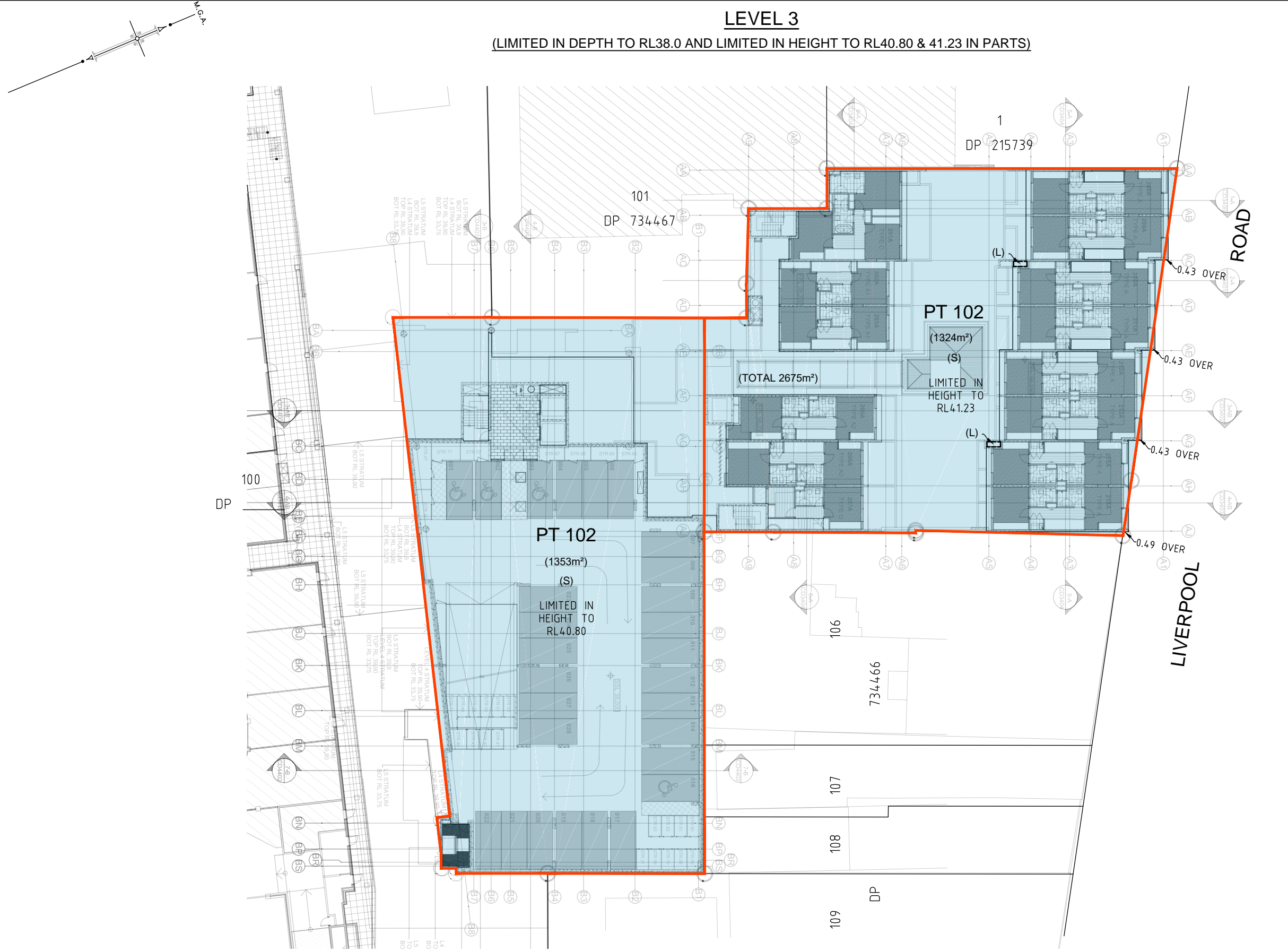
DP **STAGE 2**

REV F :05-04-17

LEVEL 3

(LIMITED IN DEPTH TO RL38.0 AND LIMITED IN HEIGHT TO RL40.80 & 41.23 IN PARTS)

DESIGN REFERENCE:  
CD 2003 Rev. P7 BY JPRArchitects



- LOT 102 - RESIDENTIAL
- LOT 103 - RETAIL

INDEX

CONTENTS	SHEET
BELOW GROUND	2
GROUND LEVEL	3
LEVEL P1	4
LEVEL 2	5
LEVEL 3	6
LEVEL 5	7
LEVEL 6 AND ABOVE	8

PROPOSED EASEMENTS:

- (S) EASEMENT FOR SERVICES (WHOLE OF LOT) TO BURDEN LOT 102 AND BENEFIT LOT 103
- (L) EASEMENT FOR TRADE EXHAUST VARIABLE WIDTH LIMITED IN TO BURDEN LOT 102 AND BENEFIT LOT 103

Surveyor: JACEK IDZIKOWSKI  
Date of Survey:  
Surveyor's Reference: 22632-42405PS1

PLAN OF PROPOSED SUBDIVISION OF LOT 101 IN DP

LGA: INNER WEST  
Locality : ASHFIELD  
Subdivision No:  
Lengths are in metres. Reduction Ratio 1: 250

Registered

DP STAGE 2

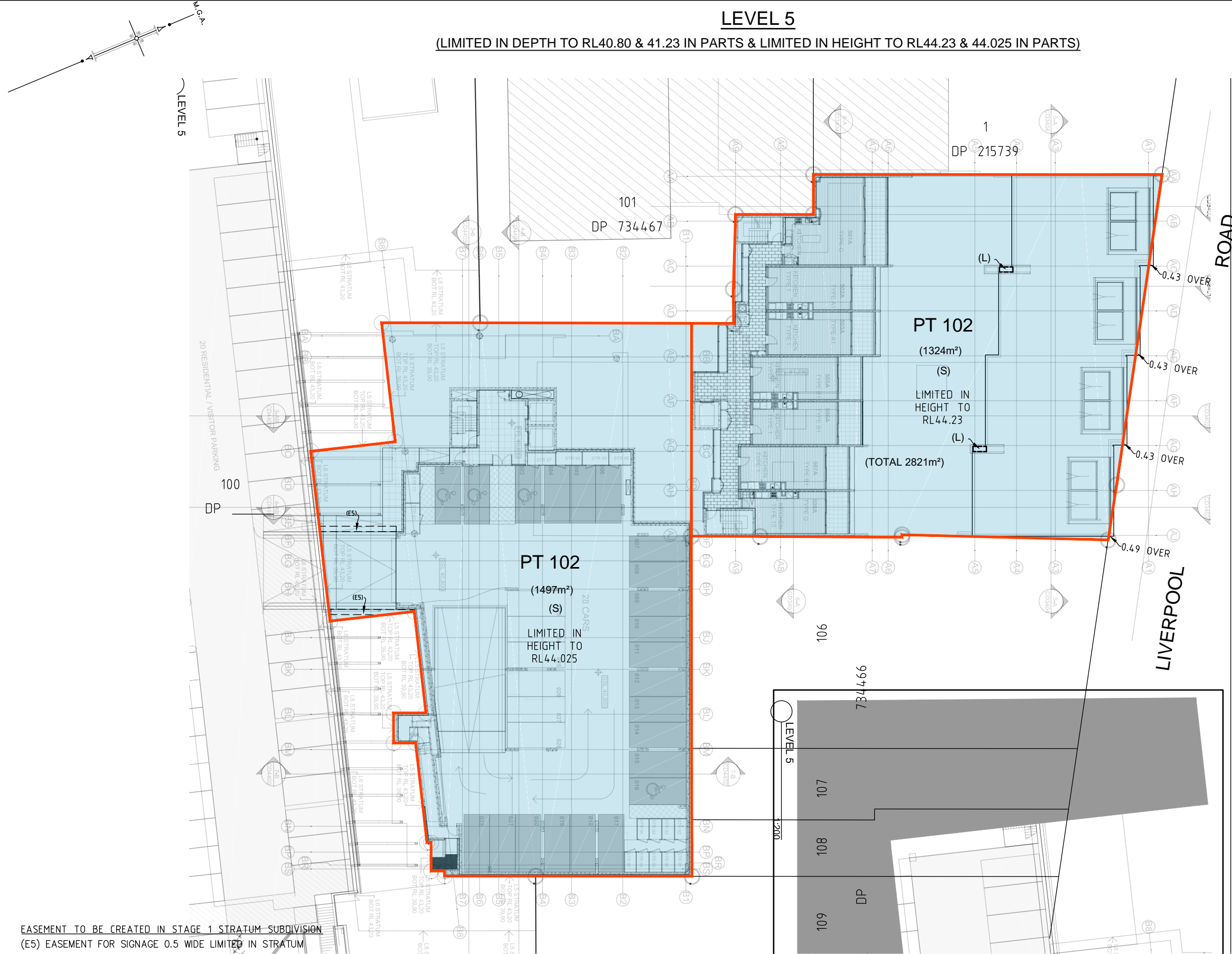
REV F :05-04-17



LEVEL 5

(LIMITED IN DEPTH TO RL40.80 & 41.23 IN PARTS & LIMITED IN HEIGHT TO RL44.23 & 44.025 IN PARTS)

DESIGN REFERENCE:  
CD 2004 Rev. P7 BY JPRArchitects



- LOT 102 - RESIDENTIAL
- LOT 103 - RETAIL

INDEX

CONTENTS	SHEET
BELOW GROUND	2
GROUND LEVEL	3
LEVEL P1	4
LEVEL 2	5
LEVEL 3	6
LEVEL 5	7
LEVEL 6 AND ABOVE	8

PROPOSED EASEMENTS:

- (S) EASEMENT FOR SERVICES (WHOLE OF LOT) TO BURDEN LOT 102 AND BENEFIT LOT 103
- (L) EASEMENT FOR TRADE EXHAUST VARIABLE WIDTH LIMITED IN TO BURDEN LOT 102 AND BENEFIT LOT 103

Surveyor: JACEK IDZIKOWSKI  
Date of Survey:  
Surveyor's Reference: 22632-42405PS1

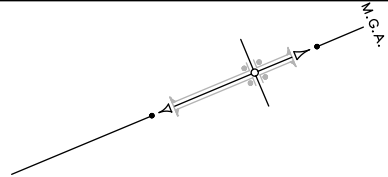
PLAN OF PROPOSED SUBDIVISION OF LOT 101 IN DP

LGA: INNER WEST  
Locality : ASHFIELD  
Subdivision No:  
Lengths are in metres. Reduction Ratio 1: 250

Registered

DP STAGE 2

REV F :05-04-17



LEVEL 6 & ABOVE  
(LIMITED IN DEPTH TO RL44.025 & RL44.23 & UNLIMITED IN HEIGHT)

DESIGN REFERENCE:  
CD 2005 Rev. P7 BY JPRArchitects



- LOT 102 - RESIDENTIAL
- LOT 103 - RETAIL

INDEX

CONTENTS	SHEET
BELOW GROUND	2
GROUND LEVEL	3
LEVEL P1	4
LEVEL 2	5
LEVEL 3	6
LEVEL 5	7
LEVEL 6 AND ABOVE	8

PROPOSED EASEMENTS:  
(S) EASEMENT FOR SERVICES (WHOLE OF LOT) TO BURDEN LOT 102 AND BENEFIT LOT 103  
(L) EASEMENT FOR TRADE EXHAUST VARIABLE WIDTH LIMITED IN TO BURDEN LOT 102 AND BENEFIT LOT 103

Surveyor: JACEK IDZIKOWSKI  
Date of Survey:  
Surveyor's Reference: 22632-42405PS1

PLAN OF PROPOSED SUBDIVISION OF LOT 101 IN DP

LGA: INNER WEST  
Locality : ASHFIELD  
Subdivision No:  
Lengths are in metres. Reduction Ratio 1: 250

Registered

DP **STAGE 2**  
REV F :05-04-17